

THE TRACTOR MAGAZINE

TM No. 1

\$ 3.50



FEATURE TRACTOR

EARTHMASTER

Earthmaster Farm Equipment Burbank California

The Earthmaster Farm Equipment Company was formed shortly after the end of World War II. According to Charles Latham, the most recent builder of Earthmaster tractors, the venture was started by the Bank of America to provide jobs to immigrant labor. The Earthmaster Company was believed to be a subsidiary of the Adel Precision Products. This is true, but the development of the tractor and related equipment had began earlier as perhaps a subsidiary of another Transamerica

Company. The annual report of Transamerica Corporation in 1946 mentions Aerco company (a subsidiary) as manufacturing farm equipment.

"Aerco's production embraces agricultural implements including two wheel tractors, feed mixers and applicators for dairy farming. Development is nearly completed on a small four-wheel tractor and on implements to be used with it."

This certainly describes the

Earthmaster company as they also produced two-wheeled garden tractors the model S and SSR.

"In order to simplify operations and to effect economics, the administrative departments of Adel and Aerco were combined on October 31, 1946. At the end of 1946, the stock of Aerco held by Transamerica was acquired by Adel in exchange for 55,091 shares of its capital stock. Aerco has retained its corporate existence, but is now directly owned by Adel. The facilities of the two companies complement each other and as a result the over-all manufacturing operation has been improved. Substantial reductions in administrative personnel have been made and other benefits will be derived from the consolidation of operations"



Corporate offices were located at 10777 Van Owen Street in Burbank, California. The



serial numbers were stamped on the frame below the instrument panel. I could find no indication of a serial number, but the frame has been slightly corroded because of the proximity of the battery.

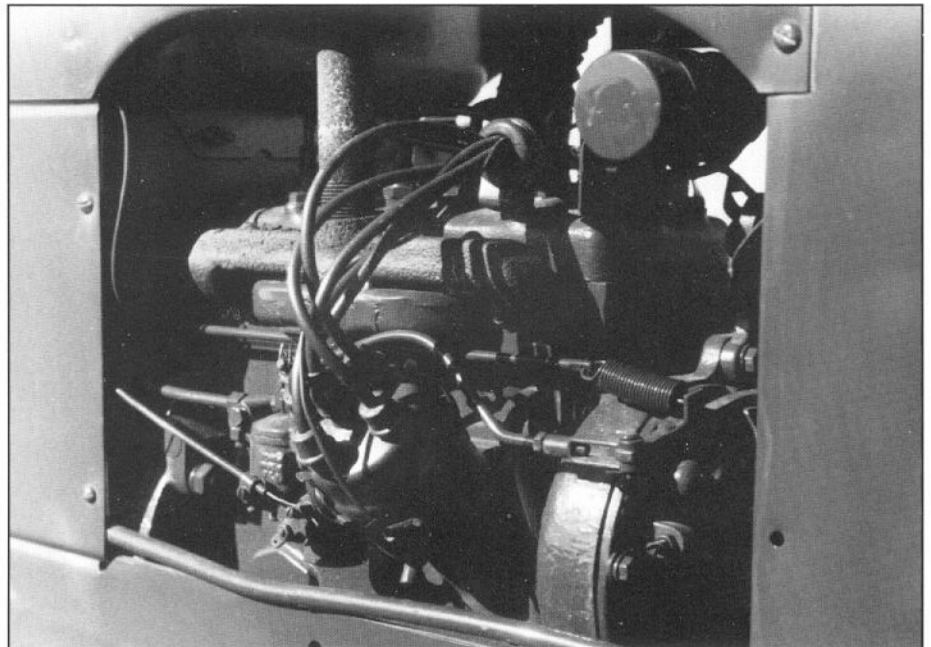
The Earthmaster Farm Equipment Company built several different models of tractors during their fairly short existence. The model "C" was the first model and the basis for the other models produced by Earthmaster. The model C and other models were built on the same chassis with the same power train, with the major differences being width and ground clearance. All of the models

plant was located in Hollydale, which was between Southgate and Downey.

ment Hollydale, CA. These tags also list a tractor serial number which the oval tags do not. Don Kuska thinks the

One of the best ways to find information about a relatively unknown tractor company is to talk to someone who worked for the company. Don Kuska, worked for Earthmaster designing tillage equipment. Mr. Kuska was very helpful in providing information on the company and equipment.

As usual different tractors have different markings. The model "C" in the photographs has an oval tag which says Earthmaster Farm Equipment, Burbank, CA. Other tractors I have seen have a rectangular tag with Earthmaster Farm Equip-

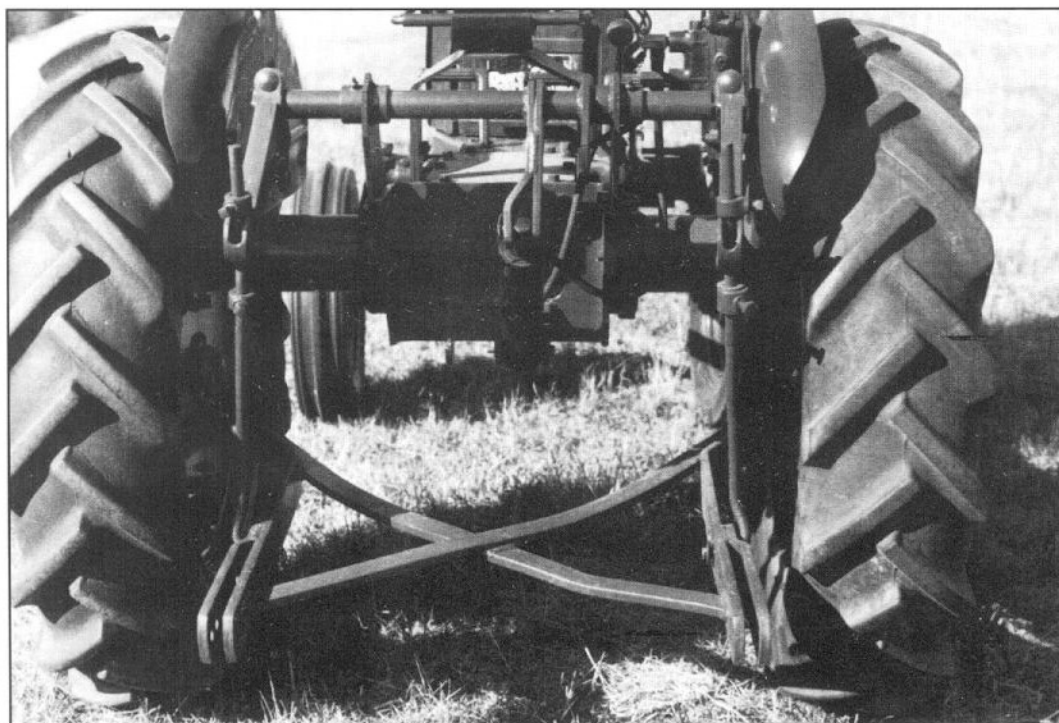
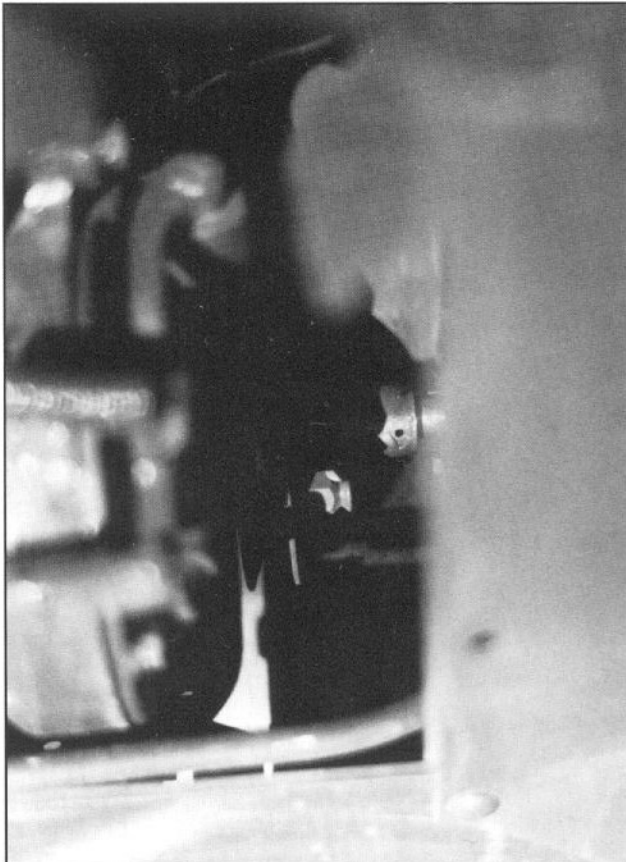


featured the Continental N62 engine. This was a four cylinder vertical inline engine with a cylinder bore of 2 3/8 inches and a stroke of 3 1/2 inches. At 2000 rated RPM, this 62 cubic inch displacement engine rated at 15.6 HP. This engine was also used in the Massey Harris Pony and the Allis Chalmers "G".

The N 62's maximum torque at 1600 RPM was 37 foot pounds. Cooling was accomplished by the thermo-syphon method pressurized McCord radiator with the help of a 14 inch belt driven fan provided the cooling for the tractor.

Engine lubrication was accomplished by a gear type

pump. The crankcase holds four quarts of either SAE 20 or SAE 30 engine oil, depending on usage and temperature. If the tractor was to be used in temperatures constantly below 0 degrees Fahrenheit, SAE 10 or SAE 20 oil was to be used. According to the operators instruction manual, Earth-master tractors were shipped from the factory with **NO** engine oil. Breaking in



procedures called for a light bodied high grade of oil SAE 20 W was recommended for temperatures above 32 degrees Fahrenheit. SAE 10W oil was recommended for temperatures below 32 degrees Fahrenheit. Startup procedures called for a small amount of oil to be placed in the top of each cylinder to provide lubrication for cylinders, rings and

valves on initial startup. For the first 50 hours of operation, one pint of a good grade oil should be mixed with every five gallons of fuel.

A unique feature of the Earthmaster tractors was the live hydraulic lift system. A hydraulic pump is powered by the belt pulley on the crankshaft. There is a peg

California. During this time they were shipped to several states in the west. Included are California, Washington, Oregon, Arizona, and several others. Because of their size they were not particularly suited for large scale farming, except for cultivation or other specialty jobs.

A wide range of equipment was offered to fit on the

hydraulic controlled mounted offset disc-harrow was available for the Earthmaster tractor. A two row mounted planter was available for planting. In the cultivator line you had several choices. There was a spring tooth cultivator, a field cultivator, and a forward mounted cotton and corn cultivator. Also available for the Earthmaster was

a six row duster, and a belly mounted sickle mower. The mower was available in 6' or 7' cutterbar lengths. For those little earth moving jobs you could purchase a rear hydraulic controlled scraper or a front mounted loader and bulldozer.

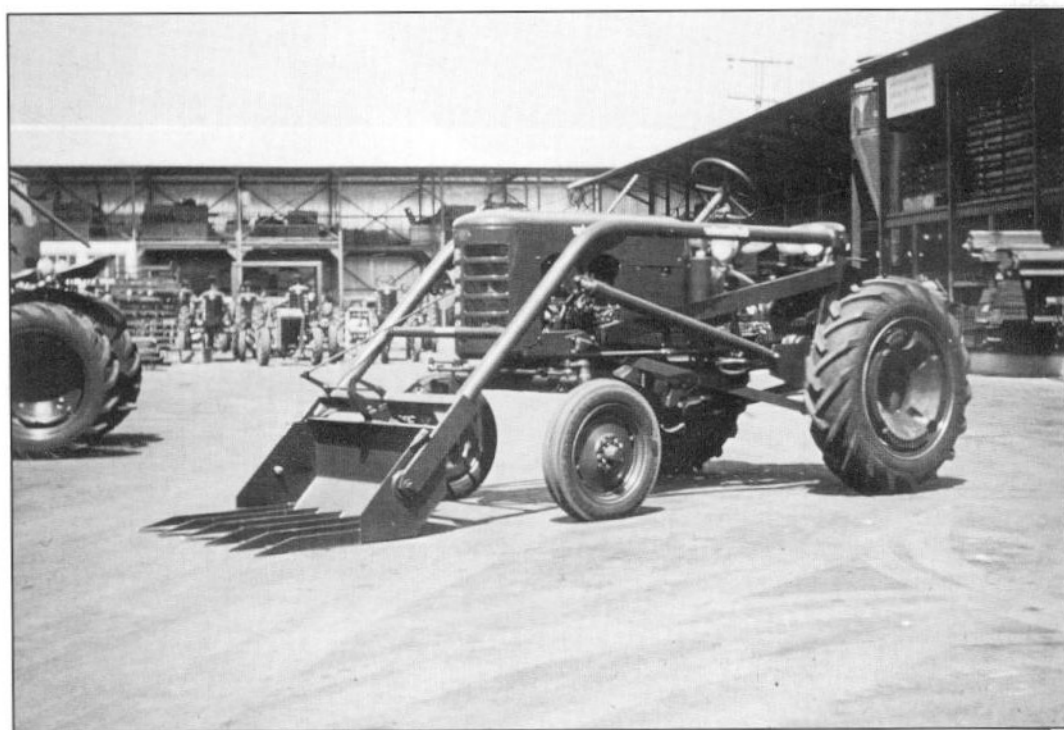


Photo of an Earthmaster with factory loader and wheel weights. This was taken by Don Kuska at the Hollydale plant, while he was employed as an engineer.

bolted through the pulley that catches a pin on the hydraulic pump. The pump shaft can be disengaged from the peg on the engine pulley.

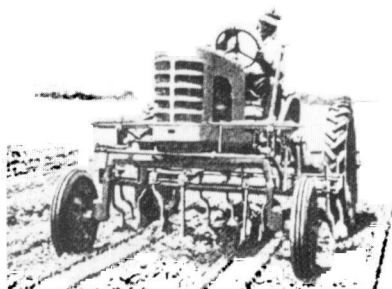
Earthmaster tractors were built for several years in

Earthmaster. First of all you need a plow for your basic tillage needs. Earthmaster offered either a 12" or 14" one way moldboard plow. For added convenience a mounted two-way moldboard plow could also be purchased. A

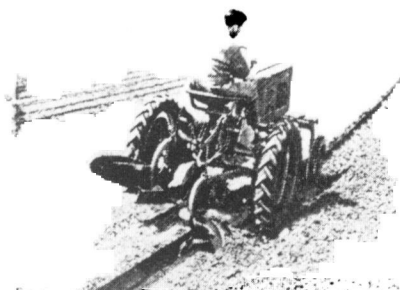
Sometime in the late 1940's the Earthmaster Farm Equipment Company was sold to a company in Philadelphia, Pennsylvania. We believe this was the S.L.

Allen & Company, the makers of Planet Jr. garden tractors. According to Don Kuska, this was Earthmasters source of cultivators.

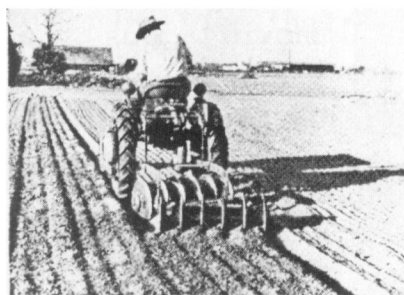
There were no tractors produced while the company was



Model CH with front-mounted vegetable cultivators.



Model CH with 2-way moldboard plows.



Mounted offset Disc-Harrow Hydraulic Controlled.



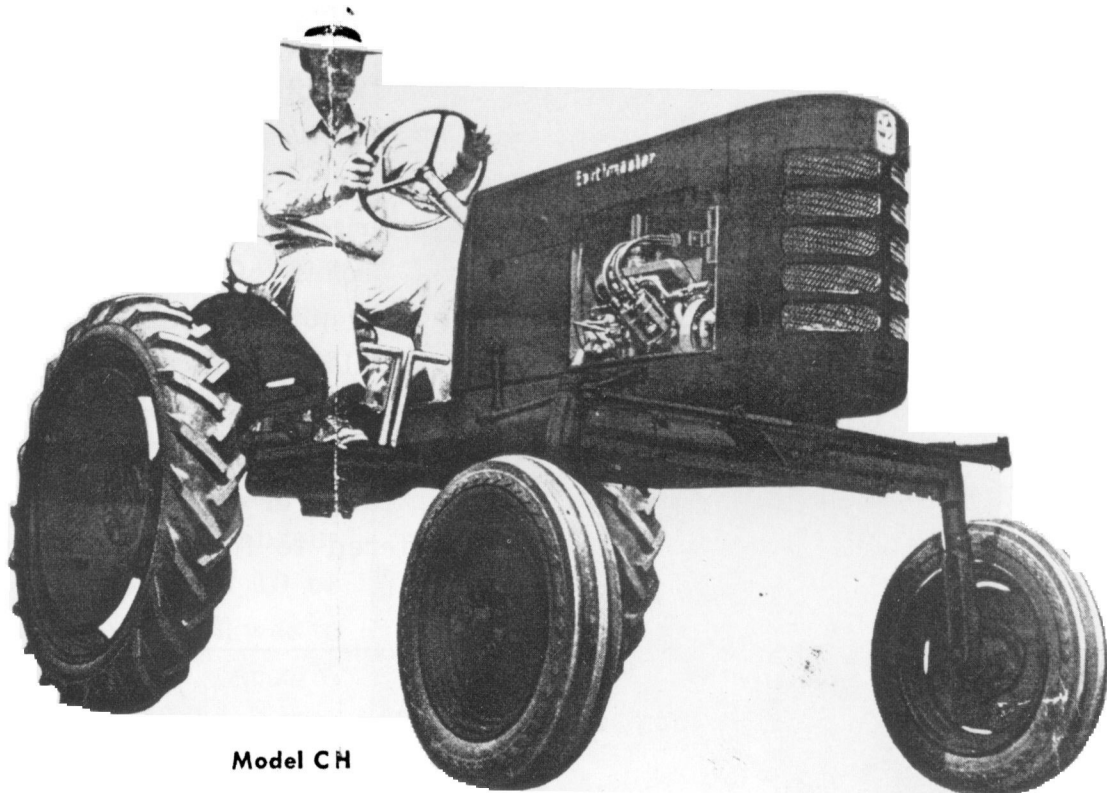
Model C with 6' mower

ENGINE

Bore and stroke 2-3/8" x 3-1/2"
Speed R. P. M. 1800-2200
Ignition—Battery and Distributor
Air Cleaner—Oil bath

COOLING Liquid

FUEL TANK Capacity—7 US gallons



Model CH

the new Earthmaster Model C Series General Purpose Tractor

Here's 100 acre performance for farms as small as 20 acres. Progressive engineering, war-developed materials and production techniques make such a tractor possible for the first time. Functional, flexible, economical—here's a tractor for every man.

The Earthmaster is a complete tractor in all respects with every feature demanded by modern farming. There's the new "Duomatic" hydraulic control for effortless implement handling. Extra strength and longer life from built-up welded

steel construction in place of traditional castings. 9 forward speeds are possible with Earthmaster's 3 transmission ratios, 3 throttle settings. The Model C has full 20" clearance while the Model CH features an exceptional 24 1/2". Either can be set lower if desired. Wheelbase can be altered for greater efficiency under varied conditions. Wheel adjustments are made in 4" steps from 36" to 64". The full line of matched, mounted implements also employs built-up steel construction and attaches with the easy Earthmaster Speedi-Hitch.

— LET THE SPECIFICATIONS TELL THE STORY —

WHEELS

	Model C Standard	C Low Position	Model CH Standard	CH Low Position
Tread width	36 to 64"	36 to 64"	36 to 64"	36 to 64"
Width overall	Min. 51"	51"	51"	51"
Height to top of Hood	51"	48"	55"	51"
Height overall	60"	57"	64"	61"
Length overall	98"	98"	100"	100"
Rear tires	8-24—4 ply		7-30—4 ply	
Front tires	4:00-15—4 ply		4:00-15—4 ply	

CLUTCH 6-1/2" Disc type

BRAKES Individual foot pedals

SPEEDS

	Model C
Forward 2.25-3.25-5.20	Reverse 2.70 at 1800 R. P. M.
Forward 2.50-3.60-5.75	Reverse 3.00 at 2000 R. P. M.
Forward 2.80-3.95-6.35	Reverse 3.30 at 2200 R. P. M.
	Model CH
Forward 2.50-3.65-5.80	Reverse 3.00 at 1800 R. P. M.
Forward 2.75-4.00-6.50	Reverse 3.35 at 2000 R. P. M.
Forward 3.25-4.50-7.25	Reverse 3.75 at 2200 R. P. M.

TURNING RADIUS Outside 7 feet

TYPE OF STEERING Ross Worm and Cam

TRANSMISSION BEARINGS Ball & tapered roller bearings

OTHER EQUIPMENT Patented Pressed Steel Adjustable Spring Comfort Seat

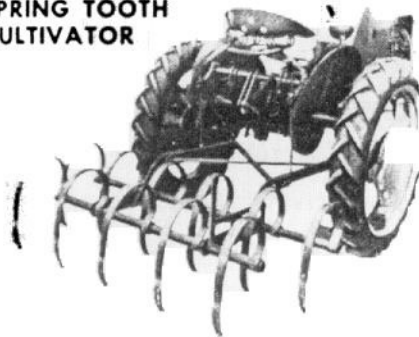
HYDRAULIC LIFT—2-way system with 4-way valve—pump mounted on front end of crankshaft.

EARTHMASTER FARM EQUIPMENT
10777 VAN OWEN ST., BURBANK, CALIFORNIA

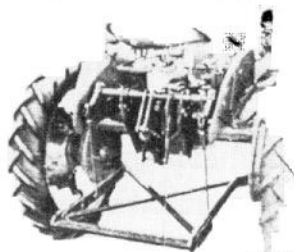


Earthmaster
FOR THE BEST IN EARTH

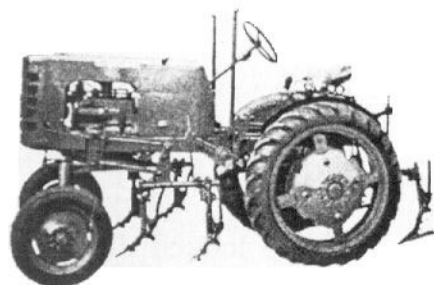
**SPRING TOOTH
CULTIVATOR**



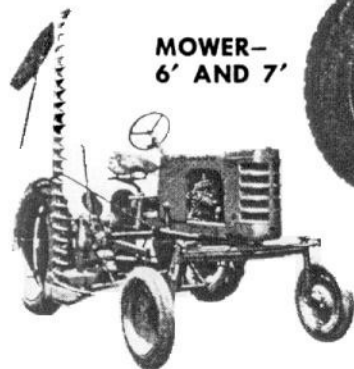
**COMBINATION DRAW-BAR HITCH
FRAME AND DRAW BAR**



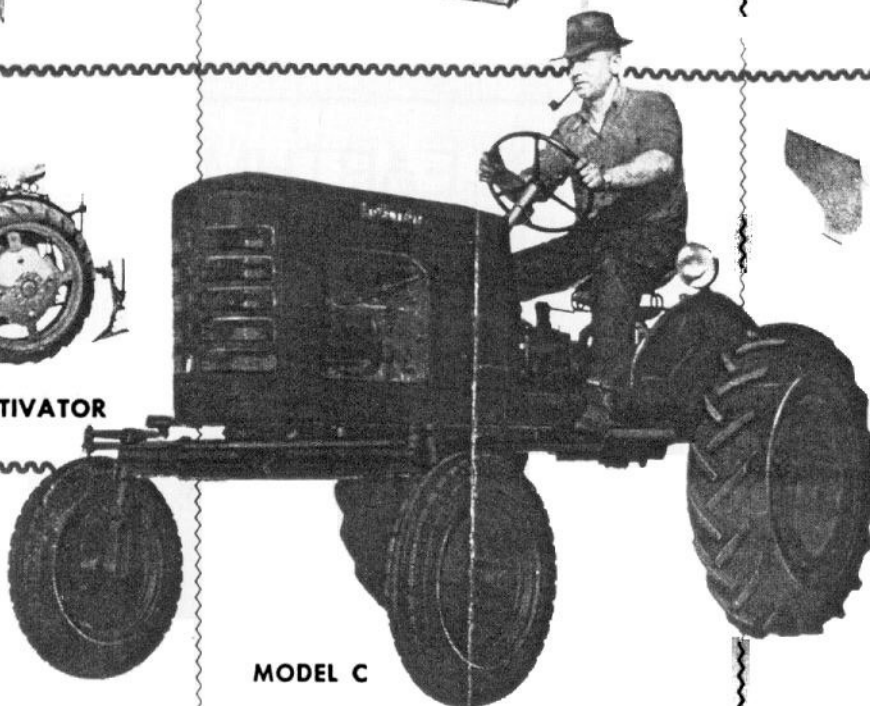
**1-WAY
12" OR 14"
PLOW**



COTTON AND CORN CULTIVATOR



**MOWER—
6' AND 7'**



MODEL C

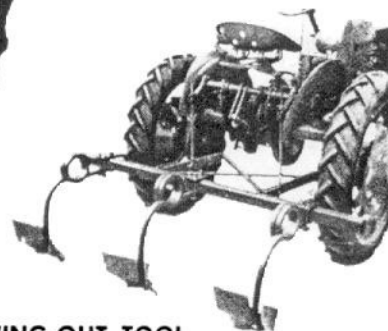
Earthmaster offers a complete line
of matched-mounted implements

Illustrated on this page are represent-
ative examples of new work-saving
Earthmaster equipment for the C series
tractors. This line is being constantly
expanded to fill every specialized farm
need.

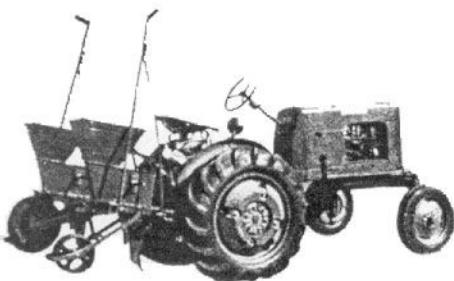
Other implements available but not
shown are Cotton and Corn Planter,
Rear Hydraulic-controlled Scraper,
Front Loader and Bulldozer.



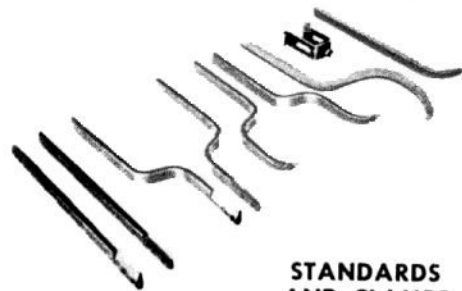
**WEED
KNIVES,
SWEEPS
AND
FURROWING SHOVELS**



FURROWING-OUT TOOL

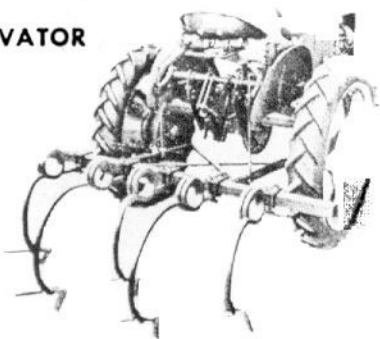


MOUNTED PLANTER

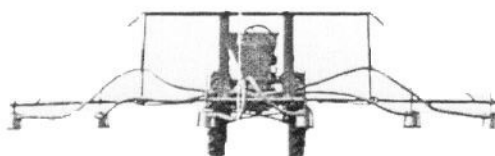


**STANDARDS
AND CLAMPS**

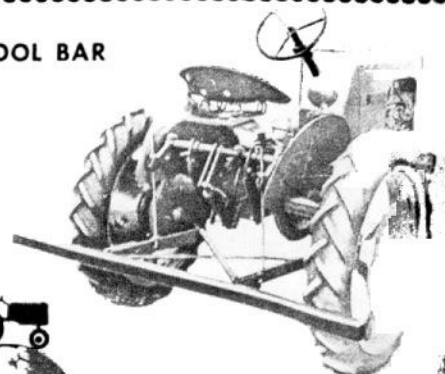
**FIELD
CULTIVATOR**



6-ROW DUSTER



TOOL BAR



Earthmaster FOR THE BEST IN EARTH



owned by the Pennsylvania company. Eventually the inventory stock was purchased by Charles F. Latham. During the late 1950's approximately 50 tractors were produced in Statesville, North

Carolina. Some parts were available until the early 1980's from C.F. Latham & Co. in Belhaven, NC. The parts were sold for scrap only few years ago. Apparently there are still several tractors

still in use in the area.

If you have any additional information on Eartmaster tractors let us know at THE TRACTOR MAGAZINE, and we will update the story
